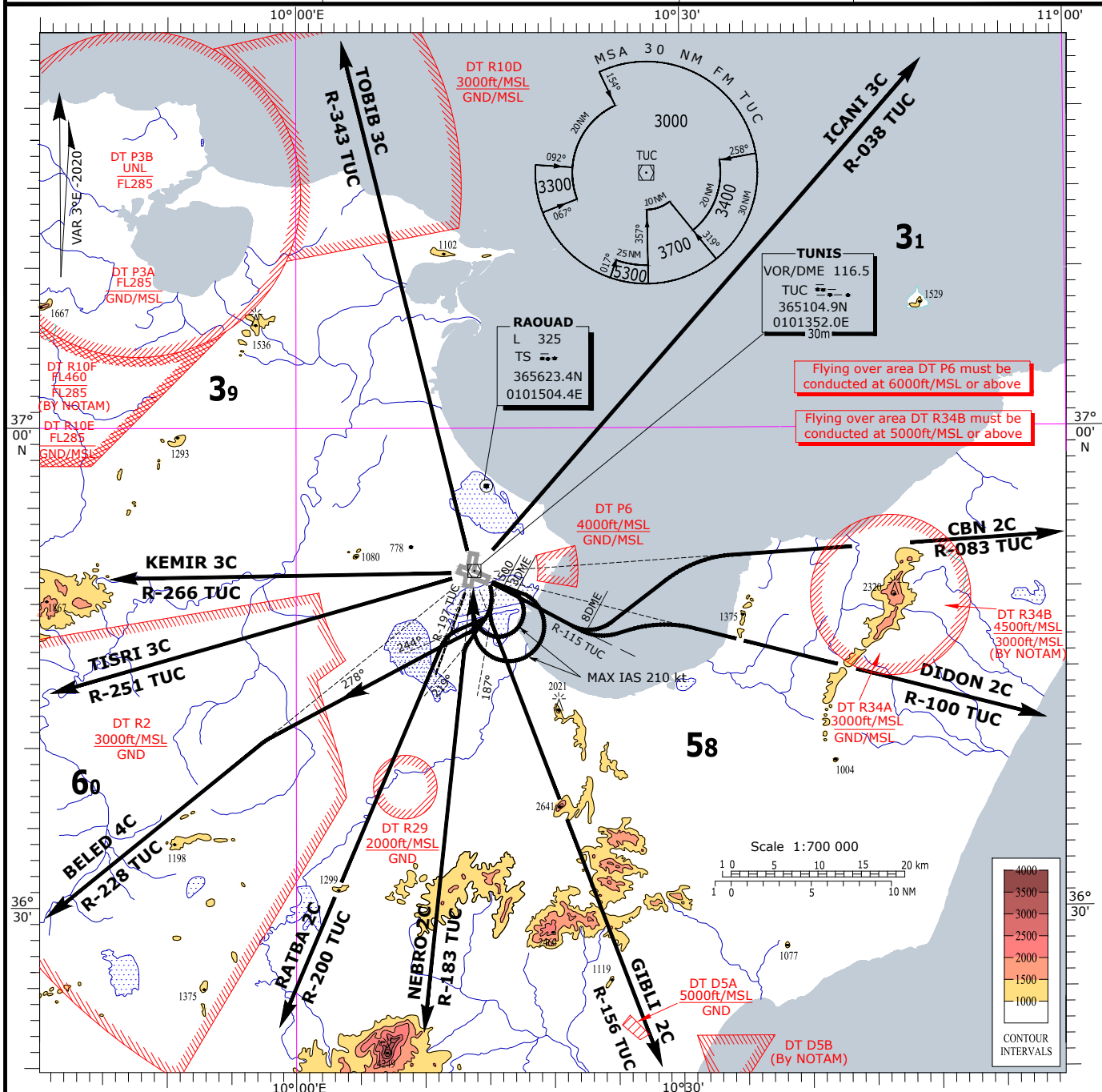


STANDARD DEPARTURE CHART
INSTRUMENT (SID) - ICAOTRANSITION ALTITUDE 6000 ft
BEARINGS AND TRACKS ARE MAGNETIC
ELEVATION AND ALTITUDE IN ftTWR 118.1
APP 121.2TUNIS-Carthage
SID RWY 11

SID RWY 11

ROUTING

REMARKS

TOBIB 3C	As soon as possible, but not later than 3 DME TUC, turn right to TUC VOR (MAX IAS 210kt, cross TUC VOR at 3000ft or above do not overshoot R-197 TUC VOR). At TUC VOR follow R-343 TUC VOR to TOBIB.	- Minimum climb gradient = 365ft/NM (slope 6%) until 3000ft. If unable to comply advise ATC
ICANI 3C	As soon as possible, but not later than 3 DME TUC, turn right to TUC VOR (MAX IAS 210kt, cross TUC VOR at 3000ft or above do not overshoot R-197 TUC VOR). At TUC VOR follow R-038 TUC VOR to ICANI.	
CBN 2C	After take off, intercept R-115 TUC VOR. At 8 DME, turn left to intercept and follow R-083 TUC VOR to CBN VOR.	
DIDON 2C	After take off, intercept R-115 TUC VOR. At 8 DME, turn left to intercept and follow R-100 TUC VOR to DIDON.	- MAX IAS 250kt below FL 100
GIBLI 2C	As soon as possible, but not later than 3 DME TUC, turn right track 187° (MAX IAS 210kt) to intercept and follow R-156 TUC VOR to GIBLI.	
NEBRO 2C	As soon as possible, but not later than 3 DME TUC, turn right track 219° (MAX IAS 210kt) to intercept and follow R-183 TUC VOR to NEBRO.	
RATBA 2C	As soon as possible, but not later than 3 DME TUC, turn right track 244° (MAX IAS 210kt) to intercept and follow R-200 TUC VOR to RATBA.	-Noise abatement procedures : See subsection DTTA AD 2.21
BELED 4C	After take off, climb straight ahead. At 500ft, turn right, track 278° to intercept and follow R-228 TUC VOR to BELED.	
TISRI 3C	After take off, climb straight ahead. As soon as possible, turn right to TUC VOR (Do not overshoot R-197 inbound TUC VOR MAX IAS 210kt, cross TUC VOR at 3000ft or above). Follow R-251 TUC VOR to TISRI.	
KEMIR 3C	After take off, climb straight ahead. As soon as possible, turn right to TUC VOR (Do not overshoot R-197 inbound TUC VOR, MAX IAS 210kt, cross TUC VOR at 3000ft or above). Follow R-266 TUC VOR to KEMIR.	-No turn permitted below 500 ft